

District Schools

Bettendorf High School

3333 18th St. | (563) 332-7001
Joy Kelly, Interim Principal

Edison Academy

Alternative High School Program
438 16th St. | (563) 359-9375

Tammy Chelf, Student Services Coordinator

Bettendorf Middle School

2030 Middle Rd. | (563) 359-3686
Lisa Reid, Principal

Grant Wood Elementary

1423 Hillside Dr. | (563) 359-8277
John Cain, Principal

Herbert Hoover Elementary

3223 S. Hampton Dr. | (563) 332-8636
Jeff Johannsen, Principal

Mark Twain Elementary

1620 Lincoln Rd. | (563) 359-8263
Caroline Olson, Principal

Neil Armstrong Elementary

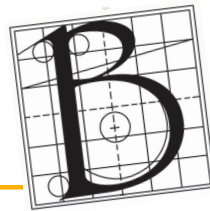
3311 Central Ave. | (563) 359-8275
Lisa Stevenson, Ph.D., Principal

Paul Norton Elementary

4485 Greenbrier Dr. | (563) 332-8936
Julie Tropa, Principal

Thomas Jefferson Elementary

610 Holmes St. | (563) 359-8261
Lana LaSalle, Principal



Board of Education

Paul Castro
Betsy Justis
Michael Pyevich
Gordon Staley

Stacey Struck
Scott Tinsman
Pepper Trahan

Administration

Michael Raso
Interim Superintendent

Maxine McEnany
Director of Financial & Business Services

Heather Stocking
Director of Human Resources

Kay Ingham
Director of Student Services

Celeste Miller
Director of Communications

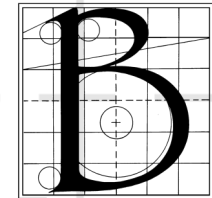
Kayla Leu
Director of Food Service

Chris Andrus
Director of Operations

Travis Hansen
Technology Coordinator

Jennifer Like
Instructional Technology Coordinator

District Quick Facts 2016-2017



Bettendorf
Community
School District



Link to
District
Website



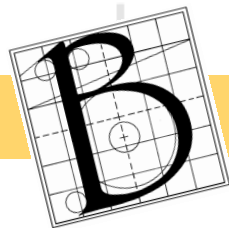
www.bettendorf.k12.ia.us

**Bettendorf Community School District
Administration Center**

3311 18th St., Bettendorf, IA 52722
(563) 359-3681

Quick Facts

2016-2017 Data



District Enrollment 4,669 Oct. 2016

(Total doesn't including preschool with private providers)

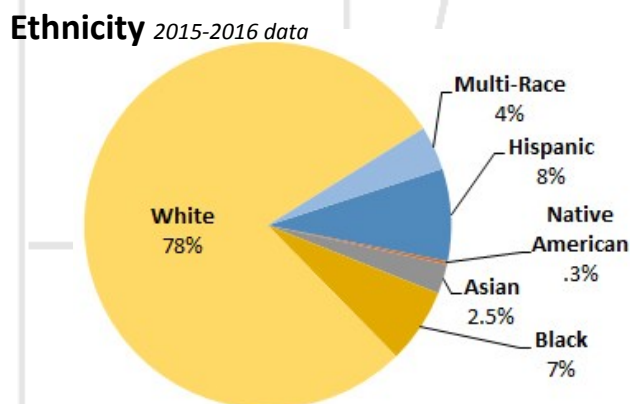
| | |
|---|------------|
| Bettendorf High School (9-12) | 1,530 |
| Bettendorf Middle School (6-8) | 1,128 |
| Grant Wood Elementary (PS-5) | 367 |
| Herbert Hoover Elementary (K-5) | 437 |
| Mark Twain Elementary (PS-5) | 302 |
| Neil Armstrong Elementary (PS-5) | 297 |
| Paul Norton Elementary (K-5) | 451 |
| Thomas Jefferson Elementary (PS-5) | 157 |
| Preschool with Private Providers | 211 |

Class Size Limits

Grades K-3 - 20-23
Grades 4-5 - 23-26

Whenever possible, the district will attempt to keep kindergarten, 1st, 2nd and 3rd grade classes at 22 students or below, and 4th - 5th grade classes at 25 or below – effective with the kindergarten class of 2016 going forward. All current grade levels, other than the 2016 kindergarten class will be grandfathered in with pre-existing class size guidelines: 1st-2nd - 25, 3rd-5th - 27.

Free & Reduced Ethnicity 2015-2016 data



The Bettendorf Community School District is a flagship school district established in 1907. The district provides a wide variety of educational programs for preschool through 12th grade students living within the district boundaries, nearly nine square miles of Bettendorf, Iowa as well as a small section of Davenport, Iowa. There are eight schools in the district: six elementary schools, one middle school, and one high school with an alternative high school program (shared with two other neighboring school districts).

Linking learning to life with

**PASSION
PURPOSE &
PRIDE**

so that all students can

**MAKE A
POSITIVE
DIFFERENCE**

BCSD  Vision

More Data & Reporting Information
<http://bettendorf.k12.ia.us/our-district/data-reporting>

Equity & Anti-Harassment Statement

It is the policy of the Bettendorf Community School District not to illegally discriminate on the basis of race, color, national origin, gender, disability, religion, creed, age (for employment), marital status (for programs), sexual orientation, gender identity and socioeconomic status (for programs) in its educational programs and its employment practices. There is a grievance procedure for processing complaints of discrimination. If you have questions or a grievance related to this policy please contact the district's Equity Coordinator, Lana LaSalle (563) 359-8261, llasalle@bettendorf.k12.ia.us

A staff of 650 is employed by the Bettendorf Community School District in full or part-time positions for the 2016-2017 school year.

Teacher Profile

All BCSD classes are taught by highly qualified teachers.

Average years with BCSD - 9.3 Years

State average - 10.3

Average years in education - 11.9 Years

State average - 13.5

Percentage of teachers with advanced degrees - 29.7% (State average - 32.7%)

Average age of teachers - 39

State average - 40.8

Average teacher salary - \$57,341

State average - \$56,254

Iowa Department of Education 2015-2016 Iowa Public School and AEA Teacher Information

High School

Graduation Rate 92.2% (State 90.8%)
2015 - 4-year data

In 2014 BHS was ranked 13th in the State of Iowa on the Iowa AP Index for the Top 50 Schools by the University of Iowa's Belin-Blank Center for Gifted Education.



Financial Profile 2016-2017

| | |
|---|--------------|
| Operating Expenditures | \$50,451,749 |
| Assessed Valuation Per Pupil | \$336,732 |
| Per Pupil Expenditure (operating fund) | \$10,934 |
| Tuition Cost | \$6,665 |
| Tax rate per \$1,000 of Taxable Valuation | \$13.85 |
| \$.01 Local Option Sales Tax Revenue | \$3,927,841 |
| Open Enrollment Revenue | \$5,100,000 |
| Average Teacher Salary | \$60,455 |