

GENERAL OBLIGATION BOND REFERENDUM

Educational Opportunities | Safety & Security | Facility Improvements

Your Vote Is Needed

The Bettendorf Community School District is asking district residents to vote on a \$30M G.O. (General Obligation) bond referendum for improvements to school learning environments and facilities. The bond would fund projects that would provide students with new future-ready and STEM areas as well as needed additional classroom space. Other projects on the bond have evolved from needs identified through facilities studies over the past 10 years, proactive safety measures, and deferred maintenance.

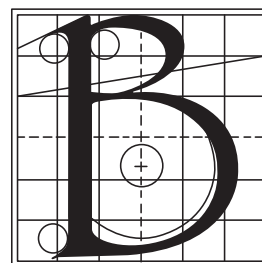
G.O. Bond Ballot Petition

The G.O. Bond petition being brought to a vote would allow the district to issue General Obligation Bonds in an amount not to exceed \$30,000,000 to provide funds to renovate, remodel, improve, furnish and equip the existing high school and middle school buildings, including security and safety improvements, STEM classroom improvements, athletic facility improvements, and to improve those sites; to renovate, remodel, improve, furnish and equip the existing Herbert Hoover Elementary School, Neil Armstrong Elementary School and Paul Norton Elementary School buildings, including security improvements and 21st Century Classroom upgrades, and to improve those sites. The election date is Tuesday, December 11, 2018.

Learn More At Our Community Forums

Wednesday, November 7
6:00 pm
Grant Wood Elementary
Commons
1423 Hillside Dr.

Tuesday, November 27
6:00 pm
Bettendorf Middle School
Cafeteria
2030 Middle Rd.



Bettendorf
Community
School District



December 11, 2018
7 am - 8 pm

St. John Vianney Church - 4097 18th St. | Waterfront Convention Center - 2021 State St.
Bettendorf Community School District voters are welcome to vote at either polling location.

Investing in Our Students' Futures and Our Schools

GENERAL OBLIGATION BOND PROJECTS

Educational Opportunities | Safety & Security | Facility Improvements

BETTENDORF HIGH SCHOOL

- Future Ready Center (Old Auditorium)
- Athletic facilities: auxiliary gym addition, fitness center expansion, wrestling room expansion
- Pool renovation
- Business classroom renovations, family & consumer science classroom renovations, replace courtyard windows, update fitness center HVAC
- Science, math, language arts, world language, band, and vocal music classroom modernizations
- Replace doors, camera upgrade, wood shop dust collection
- Resurface north parking lot, ADA/rail bleacher upgrades
- Resurface south parking lot

BETTENDORF MIDDLE SCHOOL

- Science lab, STEM room, music room, and science storage additions/rennovations
- Replace roof A, camera upgrade, HVAC upgrade
- Athletics track and grass field additions
- Flooring replacement, door replacement
- Light fixtures, bell/intercom, G&I section roof, windows, restroom partition upgrades

HERBERT HOOVER ELEMENTARY

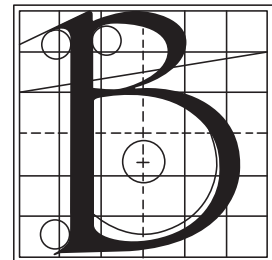
- Front entrance, nurse's office, camera upgrade, gym renovations
- Doors, windows, playground upgrades
- Light fixtures, carpet upgrades
- Resurface parking lot

PAUL NORTON ELEMENTARY

- Front entrance, commons/gym, music, camera, playground renovations and upgrades
- Classroom modernization, bathroom upgrades
- Resurface parking lot

NEIL ARMSTRONG ELEMENTARY

- Playground upgrades
- Carpet replacement



Bettendorf
Community
School District

PROPERTY TAX BOND (Not to Exceed) - \$30 MILLION

- Property tax increase would be for a maximum of 20 years, which is the bond repayment period.
- Debt service levy required for \$30M - \$1.55 per \$1,000 of taxable valuation. However, district will offset debt service levy with reductions in other property tax levies where appropriate.
- Note: The tax impact is not simply the bond request multiplied by the assessed value of a property. Property tax rollbacks and homestead credits reduce the assessed value of property tax.

ESTIMATED MONTHLY TAX INCREASE EXAMPLES

Assesed Value	Estimated Net Taxable Value	MAXIMUM		
		\$1.55 Increase	\$1.00 Increase	\$0.50 Increase
\$100,000	\$50,771	\$7	\$4	\$2
\$150,000	\$83,431	\$10	\$7	\$3
\$200,000	\$111,242	\$14	\$9	\$4
\$300,000	\$166,863	\$21	\$14	\$7
\$400,000	\$222,484	\$28	\$18	\$9