

Iowa Growth Report 2017-2018

Bettendorf Community Schools
(0621)

Measuring Student Growth with the *Iowa Assessments*

Understanding how student achievement changes and grows over time is extremely important for improving educational outcomes. This report summarizes achievement growth on the *Iowa Assessments* for grades in your district with 10 or more students. Your district's results reflect performance during the 2017-2018 school year. State and national performances are for the previous year. A final report will be created at the end of the school year.

Gain Scores are a measure of student growth anchored on the National Standard Score (NSS) scale of the *Iowa Assessments*. Average Gain Scores are calculated by subtracting each student's prior-year score from their current-year score and then averaging over all students. The magnitude of a Gain Score indicates how much the group of students has changed, whereas the sign indicates if the change in achievement is positive (signifying improvement) or negative (signifying decline). Table 1 gives the average Gain Scores for Reading, Mathematics, and Science. Graphs of the data are presented in Figures 1-3.

For more information on measuring growth with the *Iowa Assessments* see: Welch, C., Dunbar, S., & Rickels, H. (2016). Measuring Student Growth in Iowa with the *Iowa Assessments*. <https://itp.education.uiowa.edu/ia/documents/Measuring-Student-Growth-in-Iowa-with-the-Iowa-Assessments.pdf>

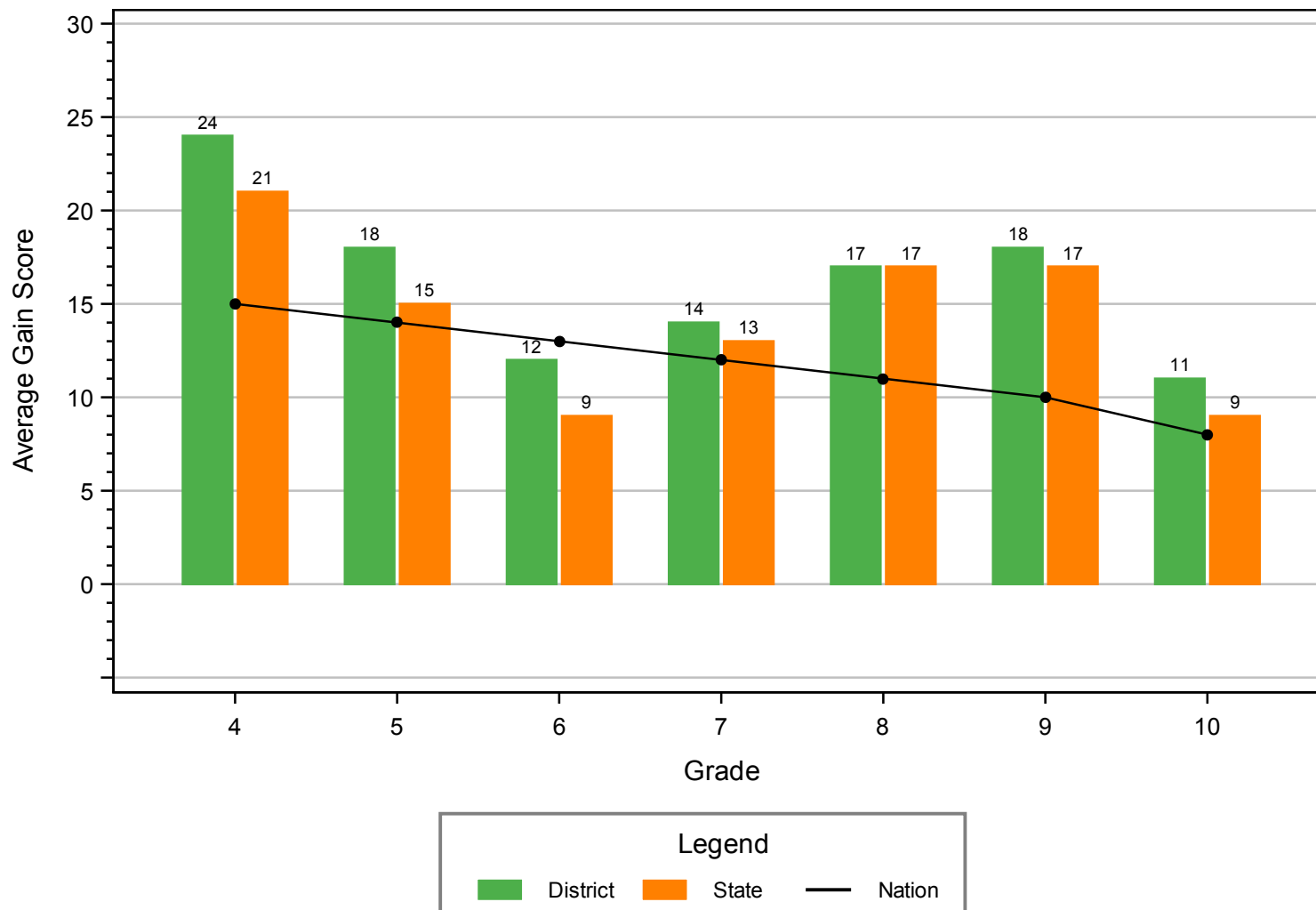
Notes: 1) If it has been more than one year since testing, your scores may be slightly higher. 2) Check to make sure that you are viewing the most current report. Any data changes or additions may not be reflected. If your district splits testing by grade level, this report may be incomplete. 3) Gain Scores in this report were calculated at the individual level. $\text{GainScore} = (\text{NSS_Year2} - \text{NSS_Year1})$.

Table 1
Average Gain Scores for Reading, Mathematics, and Science
Bettendorf Community Schools: 2017-2018

<i>Grade</i>	<i>District Size</i>	<i>Reading</i>			<i>Mathematics</i>			<i>Science</i>		
		<i>District</i>	<i>State</i>	<i>Nation</i>	<i>District</i>	<i>State</i>	<i>Nation</i>	<i>District</i>	<i>State</i>	<i>Nation</i>
4	304	24	21	15	19	16	15	20	21	15
5	286	18	15	14	15	14	14	9	10	14
6	314	12	9	13	9	13	13	12	11	13
7	341	14	13	12	11	16	12	19	19	12
8	344	17	17	11	9	11	11	17	17	11
9	348	18	17	10	13	12	10	6	9	10
10	347	11	9	8	13	13	8	14	9	8

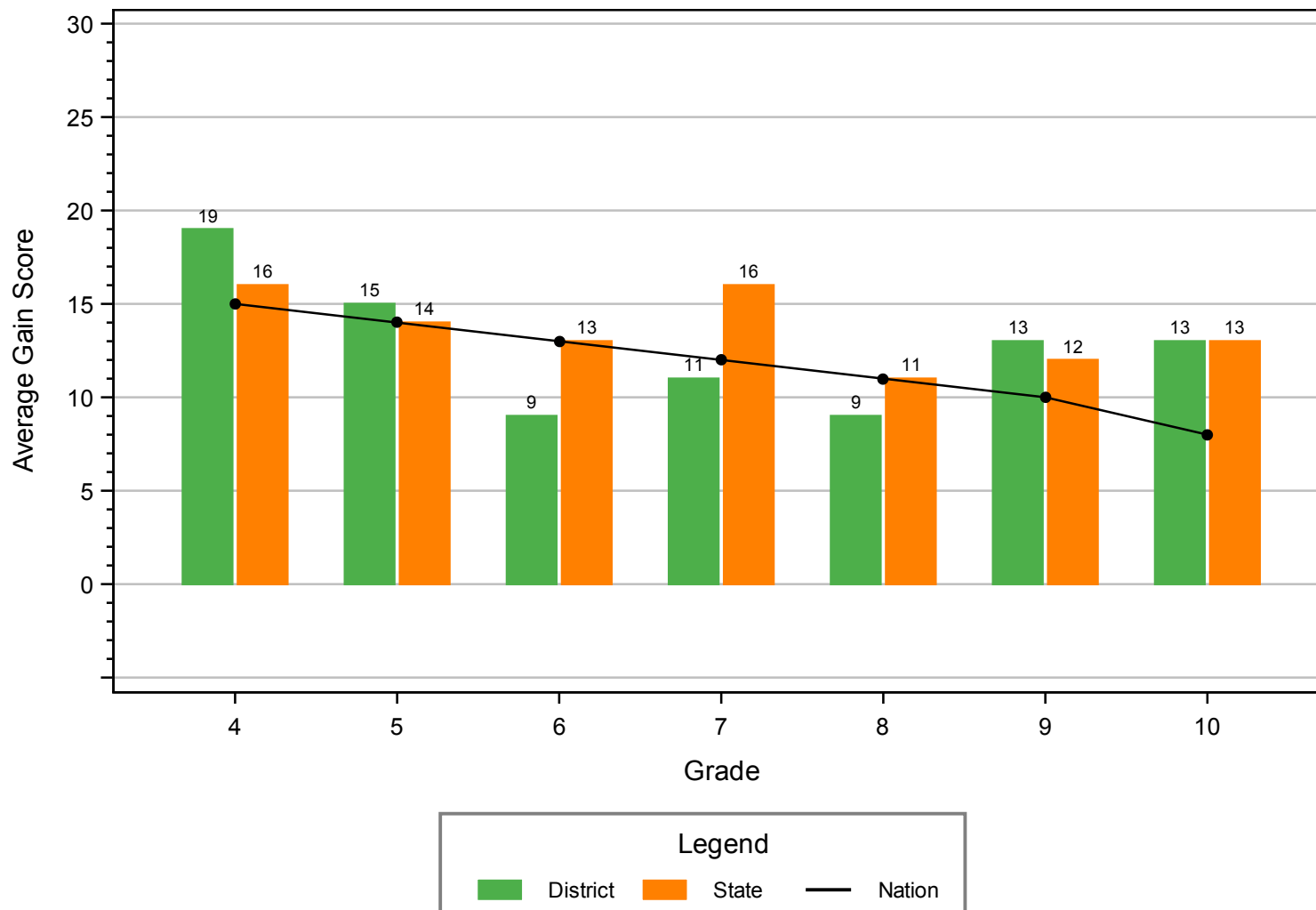
**Iowa
Growth**

Figure 1
Reading: Average Gain Scores by Grade
Bettendorf Community Schools: 2017-2018



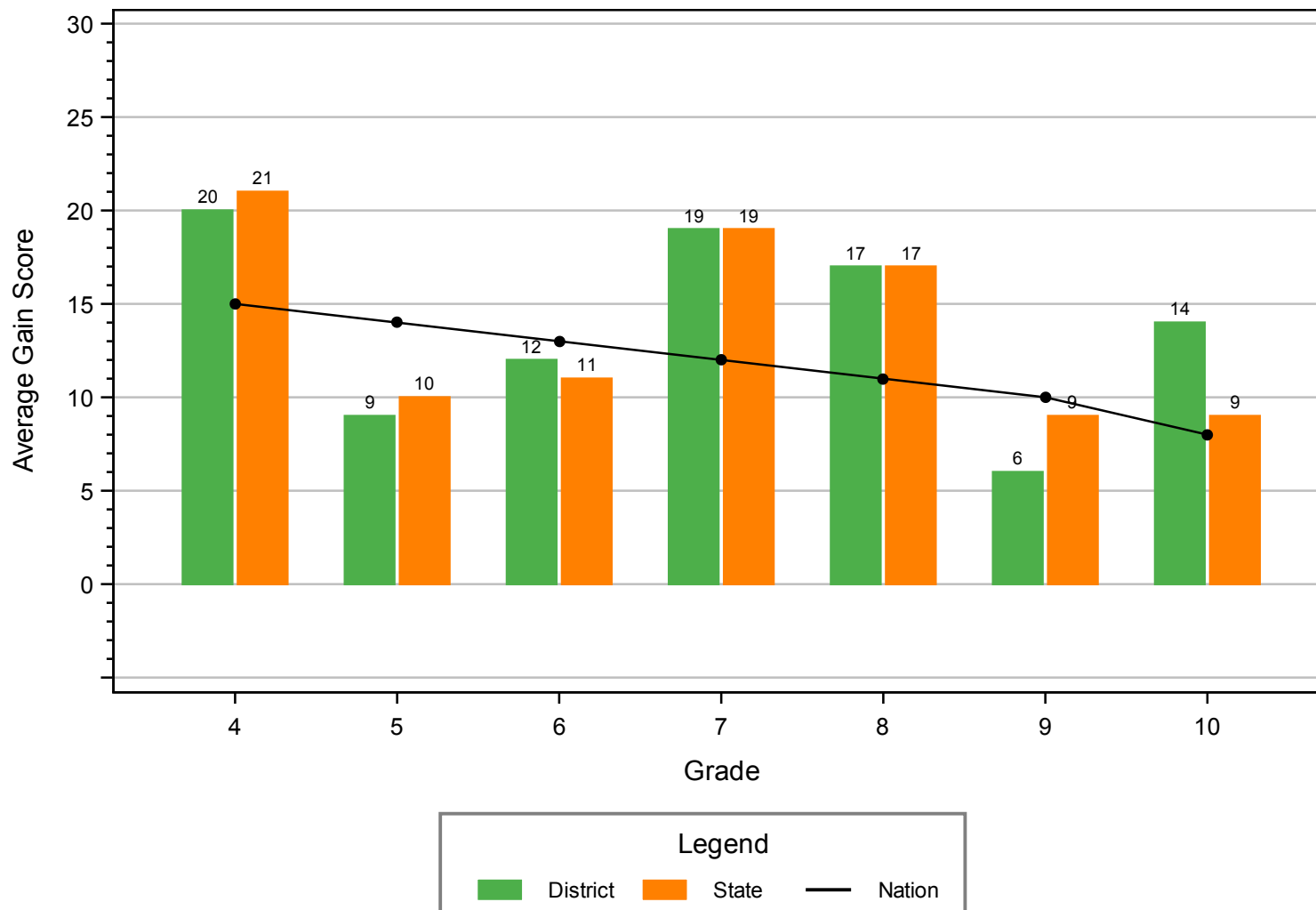
**Iowa
Growth**

Figure 2 Mathematics: Average Gain Scores by Grade Bettendorf Community Schools: 2017-2018



Iowa
Growth

Figure 3
Science: Average Gain Scores by Grade
Bettendorf Community Schools: 2017-2018



**Iowa
Growth**