

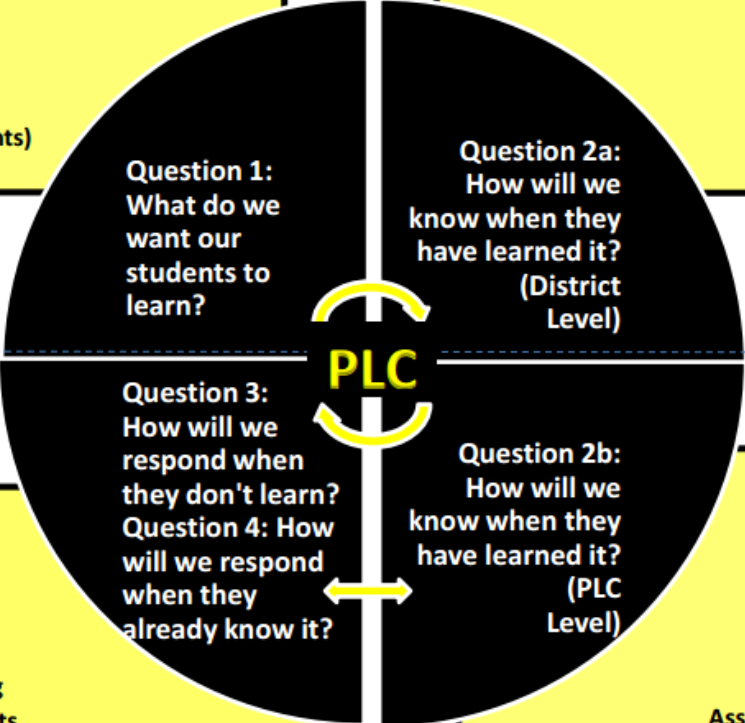
Bettendorf Community School District PLC Road Map

Foundation

Norms/Roles
Overview/Purpose
Shared Beliefs

- Prioritizing (Endurance, Leverage, Readiness) (Guaranteed & Viable Curriculum)
- Unwrapping (Verbs/Nouns/Prepositional Phrase)
- Enduring Understanding
- Learning Targets (I Can Statements)
- Sequencing (Scope & Sequence)

- Depth Of Knowledge for Learning Targets
- Common Summative Assessments
- Validity & Reliability
- Proficiency/Grading
- Evaluate Assessment



Tight (District Level) ↑

Loose (Required) (PLC Level) ↓

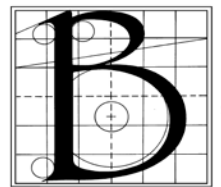
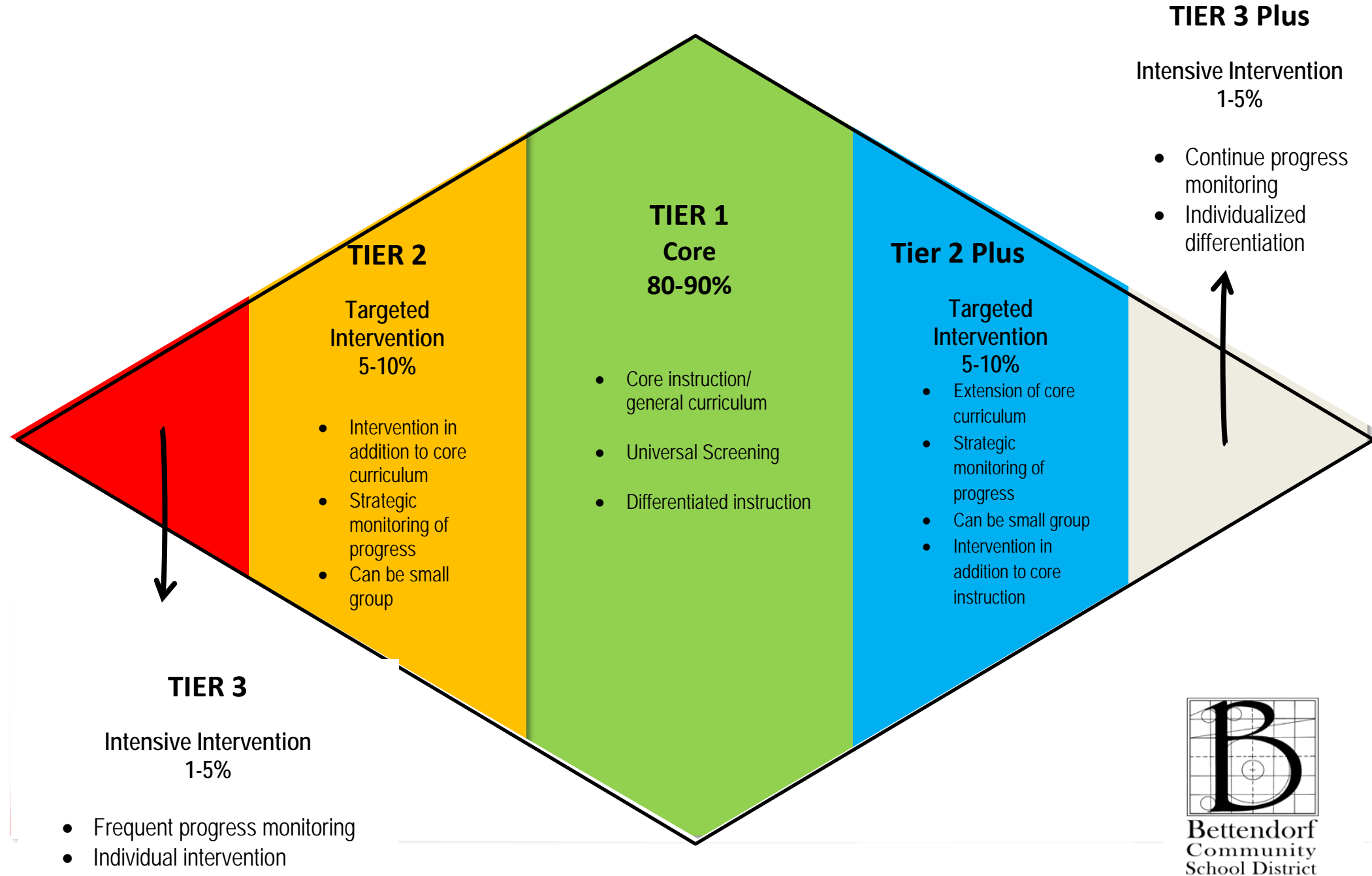
Tight (District Level) ↑

Loose (Required) (PLC Level) ↓

- Job-Embedded Professional Development
- Data Based Decision-Making
- Multi-Tier System of Supports
- Feedback to Students

- Backward Design (Unit)
- Sequencing Daily Learning Targets
- Best Practices
- Common Formative Assessments (Feedback & Intent)
- Evaluate Assessment

Continuum of Services



Paul Norton



of teachers at beginning of year 17-18
2

Herbert Hoover



of teachers at beginning of year 17-18
4

Grant Wood



of teachers at beginning of year 17-18
4
preschool teachers
2

Mark Twain



of teachers at beginning of year 17-18
3
preschool teacher 1

Neil Armstrong



of teachers at beginning of year 17-18
2
preschool teacher 1

Thomas Jefferson



of teachers at beginning of year 17-18
1

Bettendorf Middle School



of teachers at beginning of year 17-18
12

Bettendorf High School



of teachers at beginning of year 17-18
14

Special Education Funding

Least Restrictive Environment (LRE)

Level I-LRE 0-20	1.72	PreK-12 students 17-18 - 264
Level II-LRE 21-60	2.21	PreK-12 students 17-18 - 112
Level III-LRE 61-100	3.74	PreK-12 students 17-18 - 60