

**2016-2017
Lunch & Breakfast Prices**



Students

Elementary Lunch	\$2.40
Middle & High School Lunch	\$2.65
Pizza Meal at BHS and BMS	\$2.80
Chicken Meal/Boxed Pizza BHS	\$3.30
Chick-fill-A (Tuesdays)	\$3.55
Breakfast	\$1.70
Beverage	\$.50
Reduced Lunch	\$.40
Reduced Breakfast	\$.30

Adult

Lunch	\$3.75
Special Pizza Lunch	\$3.75
Breakfast	\$1.75
Beverage (Milk)	\$.50



**2016-2017
School Fees**

Transportation

- \$200 Two Semesters (am & pm)
- \$100 One Semester (am & pm)
- \$100 Two Semesters (am or pm)
- \$50 One Semester (am or pm)

Elementary Schools (Grades K-5)

- \$70 Annual Textbook Fee
- \$40 Activity Ticket *(optional)*

Middle School

- \$75 Annual Textbook Fee
- \$15 Yearbook *(optional)*
- \$50 School Musical Instrument Maintenance Fee
- \$40 Activity Ticket *(optional)*

High School

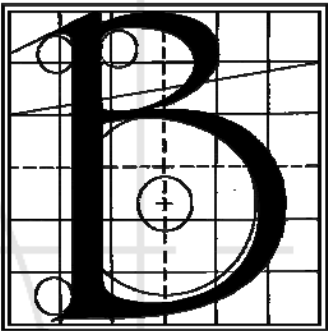
- \$112 Annual Textbook Fee
- \$15 Band and Chorus Uniform Cleaning Fee
- School Musical Instrument Maintenance Fee
 - \$50 Full-time \$25 Part-time
- \$50 Activity Ticket

(Includes admission to athletic events, school newspaper, and admission to fall play. Does not include playoffs, tournaments, musical or yearbook)
- Yearbook *(optional)*
 - \$60 Registration - September 30
 - \$65 October 1 - March 31
 - \$70 April 1 - End of School Year
 - \$75 After Yearbooks Come In

Other

- Fees for summer school courses will be collected from those who register and plan to attend.
- Fees for eye protective devices and ear protective devices will be collected by classroom instructors at cost for those classes that require them.

**School Fees
&
Fee Waiver Procedures**



**Bettendorf
Community
School District**

www.bettendorf.k12.ia.us
**Bettendorf Community School District
 Administration Center**
 3311 18th St., Bettendorf, IA 52722
 (563) 359-3681

Free & Reduced Meals



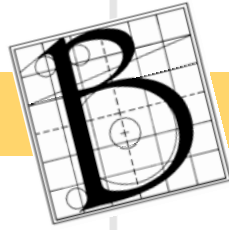
Fee Waiver Application

During registration prior to each school year, parents will receive information regarding the Iowa Eligibility Application (meal benefits) and a Fee Waiver Application. The applications can be completed online via the Infinite Campus Parent Portal or by requesting a paper application form from the district administration center or a school building. Both applications must be fully completed in order to be considered for free or reduced meals and fees.

Included with the application will be income eligibility guidelines, Hawk-i/Medicaid Information, the Meal Benefits Application, the Fee Waiver Application, and instructions on how to fill out the forms. To be considered for free or reduced meals and/or waived fees, application forms are due with registration materials. Once the application is processed, parents will be notified by mail of their status.

Applications must be submitted at the beginning of each school year regardless of past eligibility rulings. Administration will keep all paperwork for each household on file. Applications will not be processed until paperwork is completed in full and submitted, including a Meal Benefit Application and a Fee Waiver Application. Fees will not be free or reduced until paperwork has been processed.

Reduced fees are prorated at 60%. If a parent has overpaid, a Refund Voucher must be processed by the building secretary. Refund Vouchers are then sent to the Accounting Department at the District Administration Center to issue a refund check. Please allow 2-3 weeks for this process to be completed.



If the family income or household number changes at any time during the school year, the parent may fill out new Free/Reduced Meals and Fee Waiver Applications and the district administration center must be notified. If their status changes, the amount they will owe or be refunded will be prorated for that quarter.



If there are any changes during the first quarter, the amount will be prorated or refunded for three quarters. If changes occur during the second quarter amounts will be prorated by 1/2 and if change occurs during the third quarter of the school year amounts will be prorated by one quarter. The elementaries will use the same proration for students leaving and entering the district as middle school and high school. Refunds and changes will be based on the MS/HS end of quarter dates as listed on the district calendar. This proration rule applies for textbook and transportation fees.

Optional fees are not subject to fee waivers.

The 30 day grandfather clause that allows parents time to turn in Free and Reduced applications only applies to food service accounts.

Questions

Call the BCSD School Nutrition office at (563) 359-3681, ext. 3040.

Equity & Anti-Harassment Statement

It is the policy of the Bettendorf Community School District not to illegally discriminate on the basis of race, color, national origin, gender, disability, religion, creed, age (for employment), marital status (for programs), sexual orientation, gender identity and socioeconomic status (for programs) in its educational programs and its employment practices. There is a grievance procedure for processing complaints of discrimination. If you have questions or a grievance related to this policy please contact the district's Equity Coordinator, Mike Raso, Assistant Superintendent, 3311 18th St., Bettendorf, IA 52722, (563)359-3681, mraso@bettendorf.k12.ia.us